

From community benefit to community investment

Healing America's Communities

APHA Conference

Loma Linda, CA

Juan Carlos Belliard, PhD, MPH

February 7, 2017

Institute for Community Partnerships (ICP)

```
graph TD; ICP[Institute for Community Partnerships (ICP)] --> CAPS[CAPS]; ICP --> SMGC[San Manuel Gateway College]; ICP --> CHD[Community Health Development]; ICP --> CES[Community Engaged Scholarship]; SMGC --> PA[Promotores Academy];
```

CAPS

San Manuel
Gateway
College

Community
Health
Development

Community
Engaged
Scholarship

Promotores
Academy

Once upon a time in San Bernardino...



USS San Bernardino

Commissioned March 27, 1971



Employer Flight

IMAGES
of America
KAISER STEEL
FONTANA



© Marty Bernard



John Charles Anstie Jr.

Place Matters

“The Third California”



(Brookings Institution)

“The Third California”

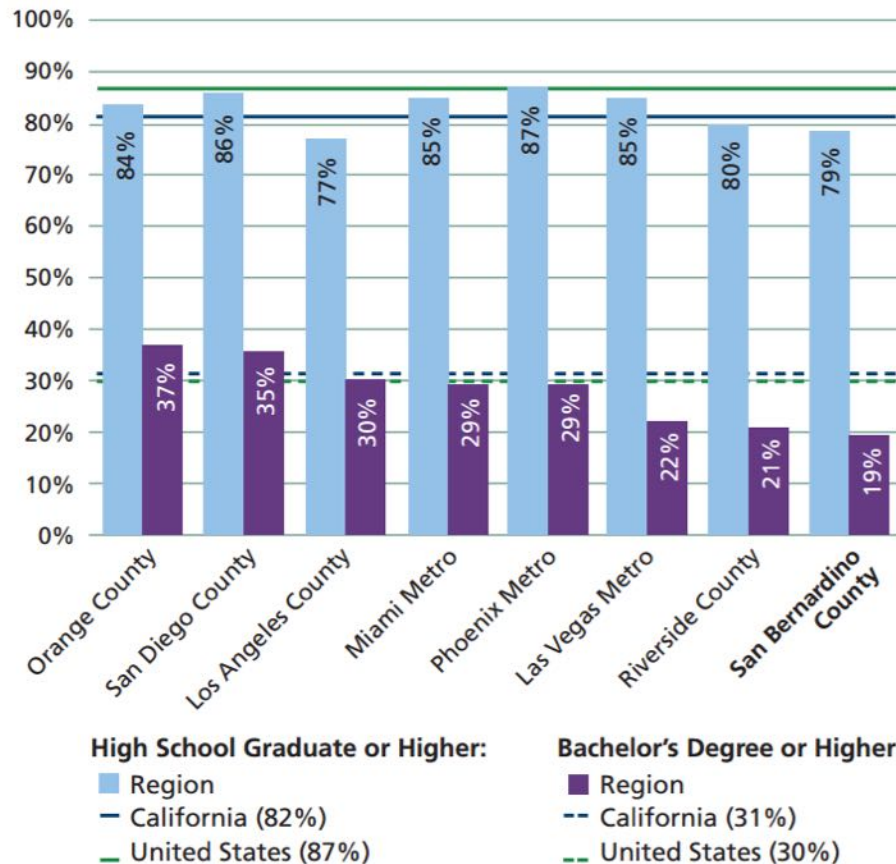
“How the Third California fares may determine whether the state remains competitive and a beacon of opportunity in the early decades of the 21st century.”

(Brookings Institution)

State of Our Region

Graduation Rate

Percentage Over Age 25 Earning High School Diploma (or Higher)
and Bachelor's Degree (or Higher)
Regional Comparison, 2013

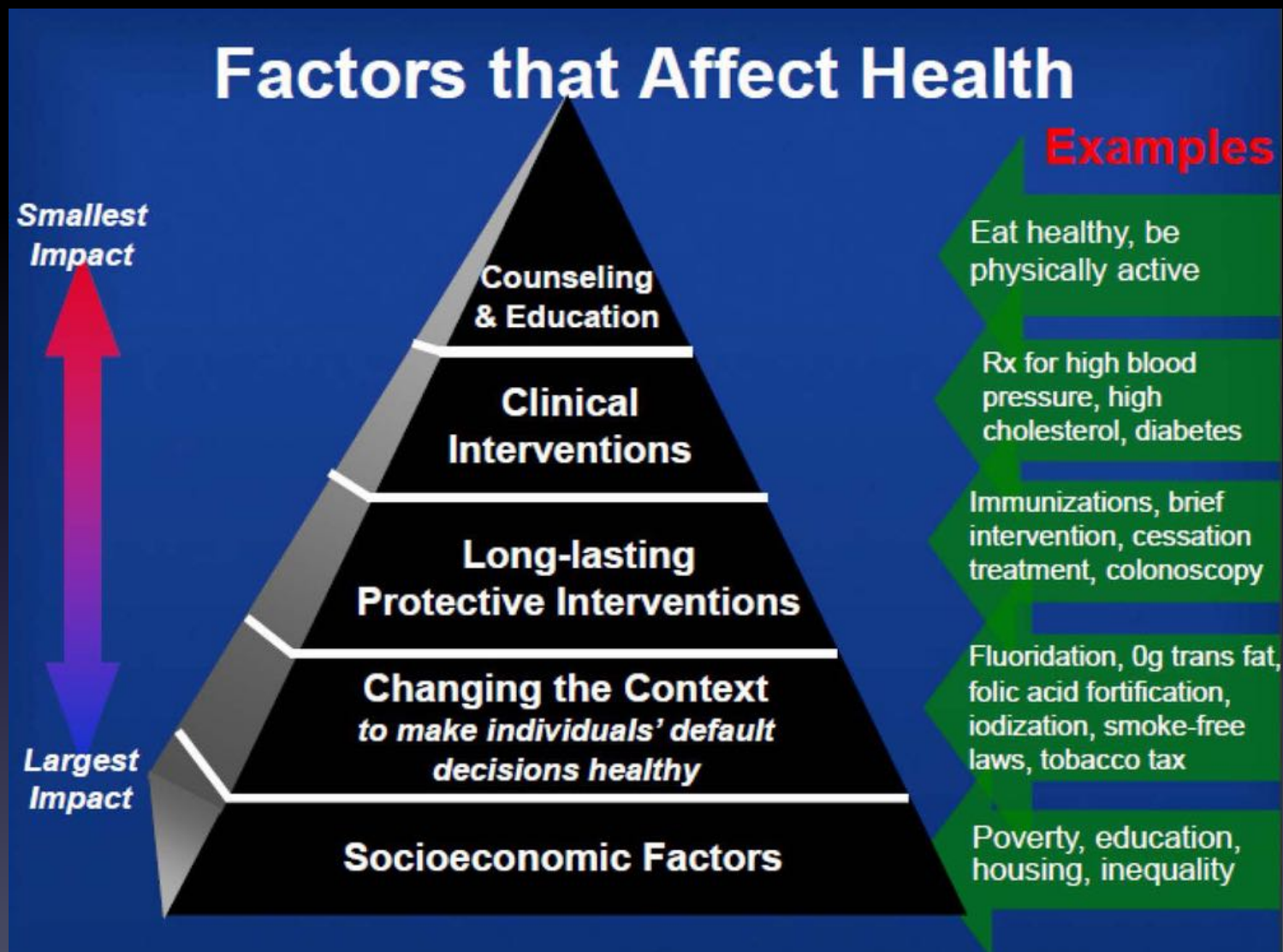


Source: U.S. Census Bureau, American Community Survey (<http://factfinder.census.gov/>)

San Bernardino and Riverside *County Health Rankings (58)*

	San Bernardino County			Riverside County		
	2014	2015	2016	2014	2015	2016
Health Outcomes	40	37	42	26	24	29
Length of Life	32	30	32	25	23	24
Quality of Life	48	50	49	38	38	42
Health Factors	45	47	47	38	39	39
Health Behaviors	44	44	41	34	32	33
Clinical Care	50	52	52	48	48	47
Social and Economic Factors	39	36	41	31	29	32
Physical Environment	53	53	57	48	49	56
Overall Rank	45	47	47	38	39	39

Social Determinants of Health



State of Our Region

Homelessness

Homeless student population in the San Bernardino City Unified School District rose from

3,400 (2014) to 4,188 (2015)



Image Source: San Bernardino: Broken City – LA Times

State of Our Region

Children in Poverty

- San Bernardino City USD total students: 54,000
- High Poverty: 91.63%
- English Learners— 26.6%
- Homeless— 8.3%

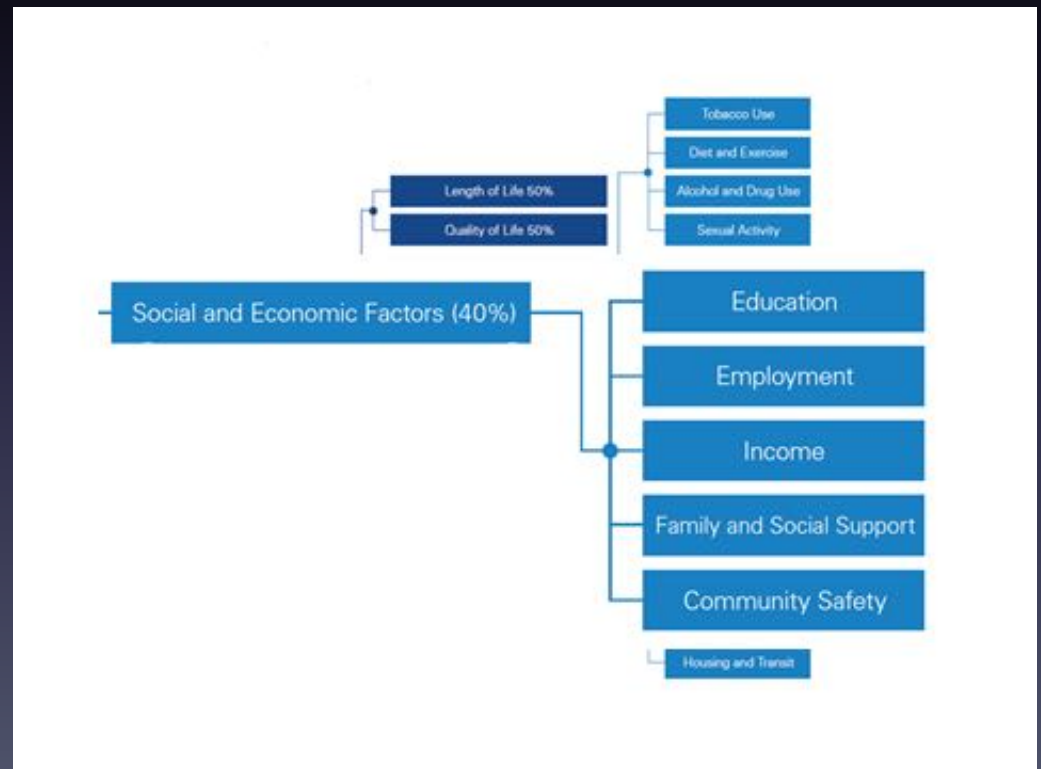


Image Source: San Bernardino: Broken City – LA Times

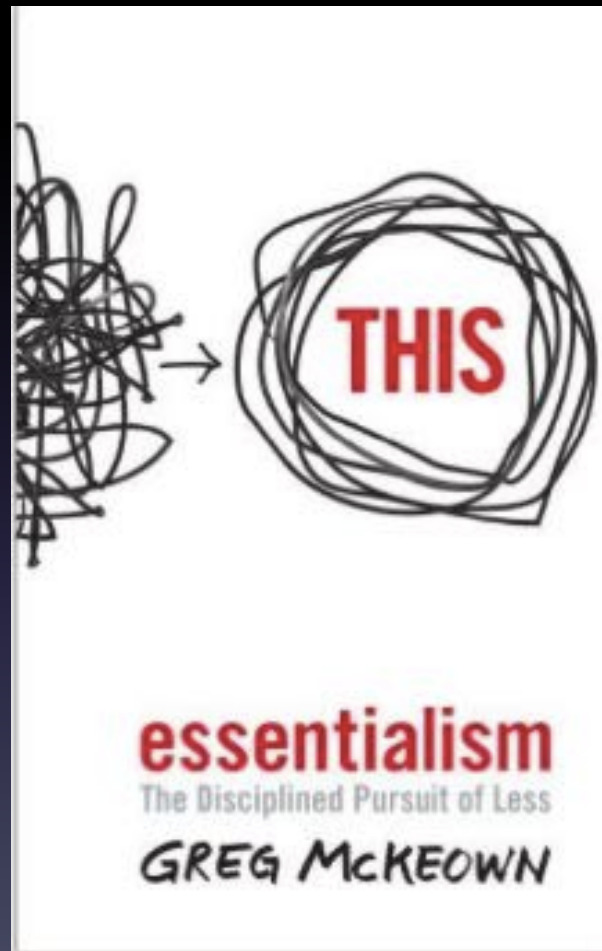
Workforce Development as a Community Benefit Priority

Social determinants of health (SDOH)

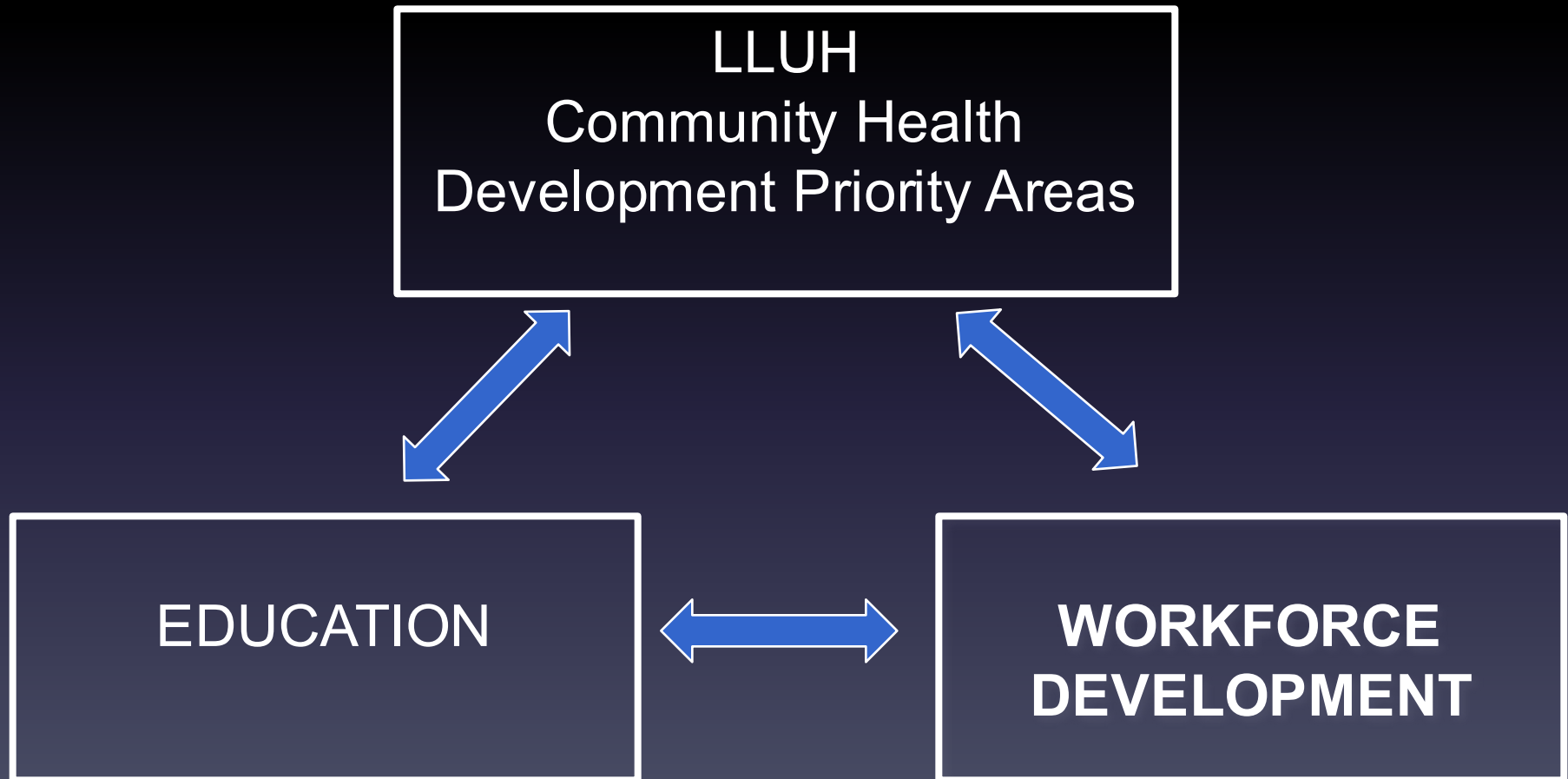
- 40-50% come from: Social and Economic Factors



Choosing a priority



“ Education is the single most modifiable social determinant of health”
– Dr. Tony Iton, California Endowment
APHA, 2016



CHNA-2016 Findings

Regional Community Health Needs Assessment (CHNA)

community members identify priorities as:

- Workforce Development
- Education opportunities
- Safety
- Built environment
- Options for healthy living
 - Physical exercise
 - Healthy foods

CHNA-2016 Findings

“We need people from this area to have opportunities for good jobs in this area and to stay in this area.” –

Focus group participant

San Bernardino Countywide Vision Alignment

“WE ENVISION a *vibrant economy* with a skilled workforce that attracts employers who seize the opportunities presented by the county’s unique advantages and provide the jobs that create countywide prosperity.”

THE ANCHOR DASHBOARD

Aligning Institutional
Practice to Meet Low-Income
Community Needs

August 2013

The Democracy Collaborative at the University of Maryland



Education as a precursor to workforce development

– Predictors:

- Ability to **read by 3rd grade** is predictive of the likelihood of a child graduating high school
- Level of vocabulary by the time a child enters school is predictive of the likelihood of later incarceration
- One of the main determinants of health in later life is correlated with graduation from high school

*“If your plan is for 1 year, plant rice...
if your plan is for 10 years, plant trees...
if your plan is for 100 years, **educate children.**”*



LLUH Pipeline programs

- K-12
 - Tutoring/Mentoring(La Escuelita)
 - Health Professions exploration and awareness:
 - Summer Gateway Program
 - My Campus
 - Robotic Surgery Exploration
 - ABC
- Certificates
 - San Manuel Gateway College
 - MA
 - CNA
 - Community Health Workers/Promotores
- 4 year College and beyond
 - UTP Program
 - Health professions programs

Marlene (Jimenez) Guerrero

- Si Se Puede Program (2005)
- LLU School of Nursing
- Graduated 2012 (first SSP LLU Graduates)



LLU Summer Gateway Graduates

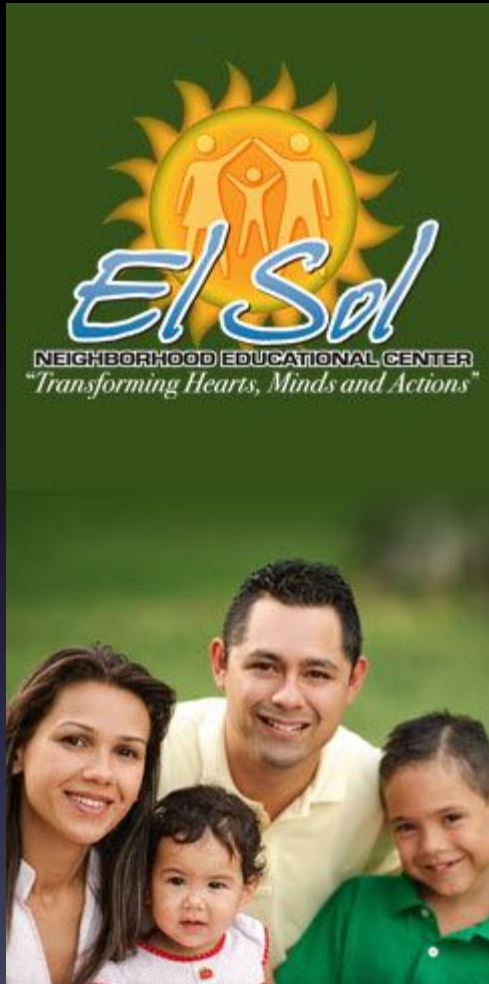
- School of Allied Health Professions: 8
- School of Nursing: 7
- School of Public Health: 2
- School of Dentistry: 2
- School of Medicine: 2
- San Manuel Gateway College: 1

Total: 21

The Promotores Academy

A Community Health Worker Training Center





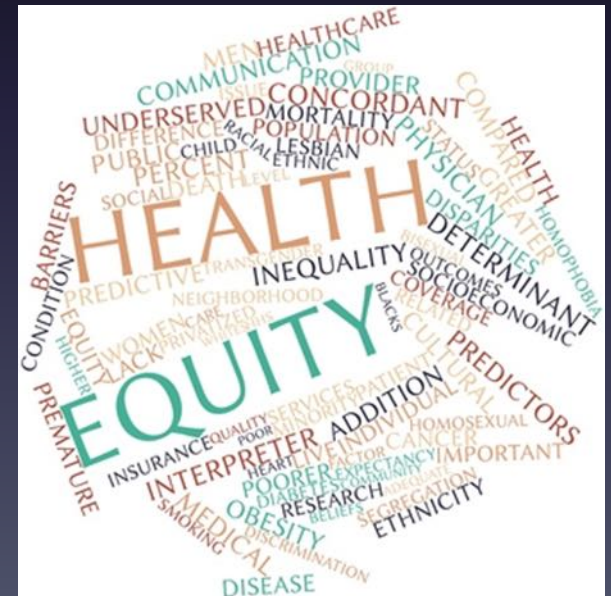
- Non profit, community based
- 20 year history
- Focus on addressing health disparities through Promotores/CHWs

PROMOTORES ACADEMY



CHWS ADDRESSING HEALTH DISPARITIES

- The goal: CHWs will provide community-based and clinic-based **support** to health care teams and patients among diverse populations.
 - Disease Prevention
 - Disease Management
 - Disease control

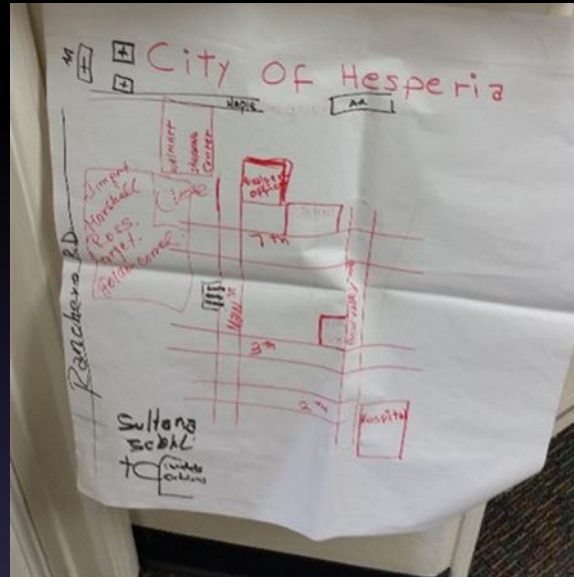
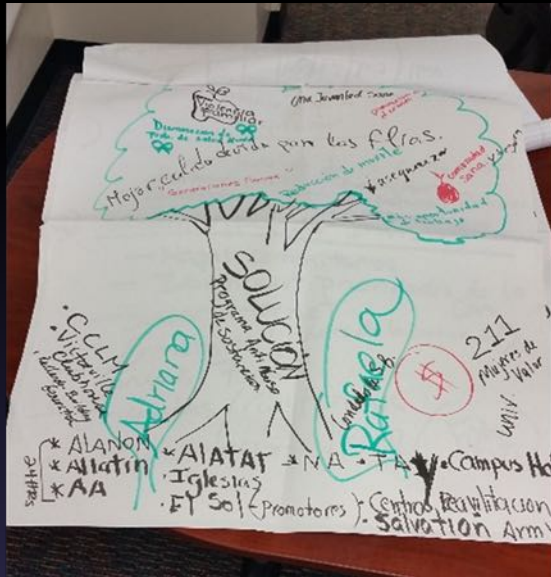


THE PROMOTOR ACADEMY

- Since 2012, 79 CHWs have received basic training certification
- Core Competencies:
 - Communication
 - Interpersonal
 - Capacity-building
 - Advocacy
 - Public Speaking and teaching
 - Fundamentals of program planning and evaluation



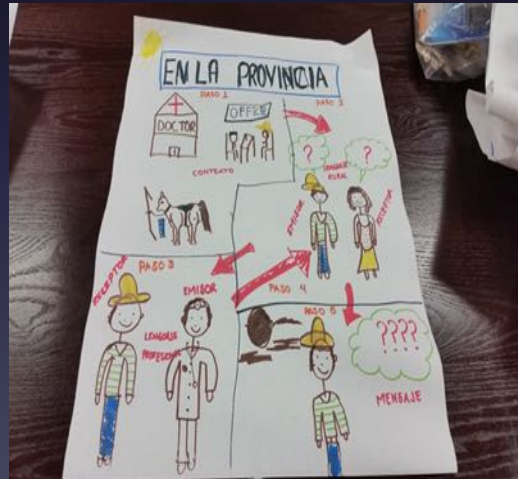
CHW 101 BASIC TRAINING



The CHW 101 Basic Training certification program consists of an **70-hour didactic** component and a **100-hour field practicum** component.

CHW 101 BASIC TRAINING (Methods & Frameworks)

- Using **popular education pedagogy**, CHWs become proficient in standardized CHW competencies through participatory lessons founded on tenets of **Social Ecological Theory** and the **Spectrum of Prevention**.



LOCAL SOLUTION: PROMOTOR ACADEMY

- Over **30 projects** spanning San Bernardino and Riverside counties have been implemented and evaluated.
- **Workforce Development:** The majority of CHWs were hired by El Sol NEC into behavioral health, maternal and child health, and nutrition programs.

“This is the very place”



SMGC Video

<http://lomalindauniversityhealth.org/sanbernardino/photos-videos>