

The Faith and Health Movement Today

Mission: Healing America's Communities
Gerald R. Winslow, Ph.D., February 7, 2107



LOMA LINDA UNIVERSITY
HEALTH

Institute for Health Policy and Leadership

Adjustments...



River goes to Washington...



LOMA LINDA UNIVERSITY
HEALTH

Mother Joseph

- » Sisters of Providence
- » Vancouver, WA: 1856
- » 1859: “Sisters of Charity of the House of Providence in the Territory of Washington”
- » 30 hospitals, schools and orphanages
- » “First Architect of the Pacific Northwest”
- » Last words: “My sisters, whatever concerns the poor is always our affair.”



Mother Joseph 1823 - 1902

Providence Ministries Today

» **Mission:** As people of Providence, we reveal God's love for all, especially the poor and vulnerable, through our compassionate service.



LOMA LINDA UNIVERSITY
HEALTH



Western Health Reform Institute 1866

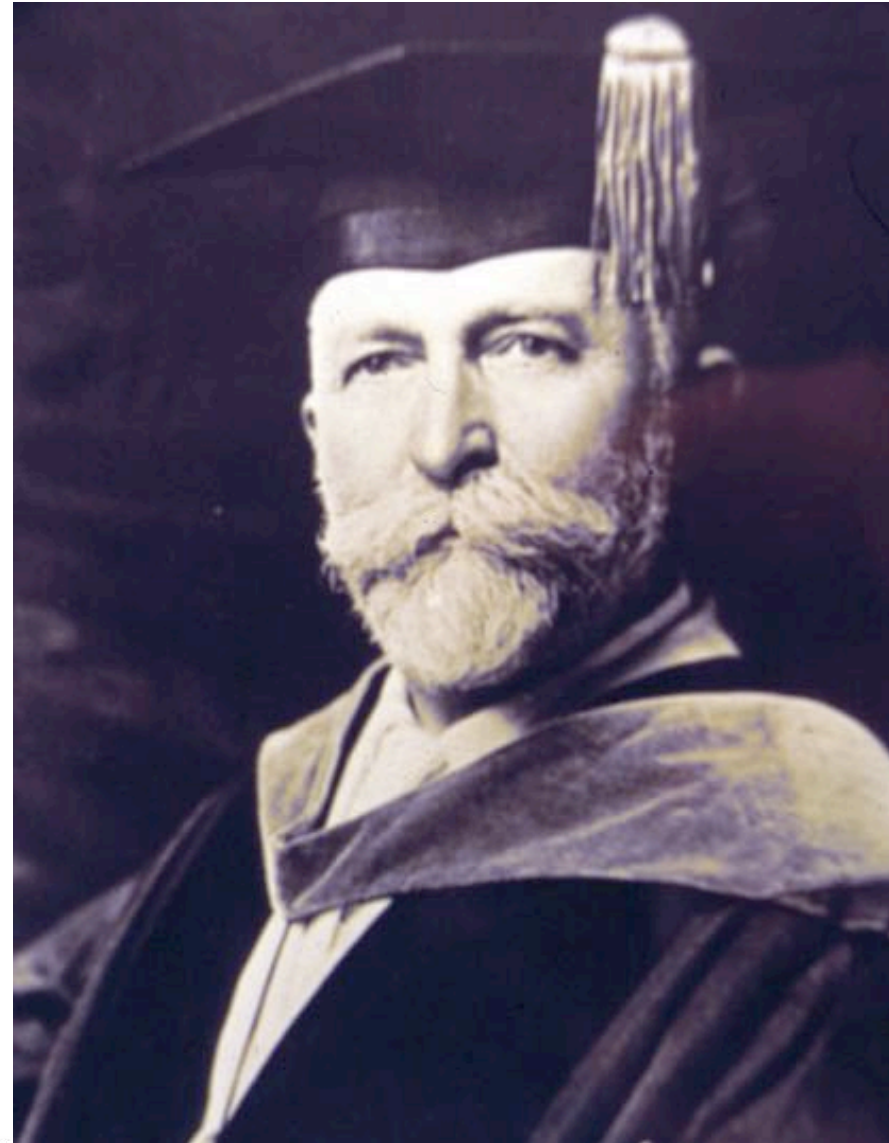


LOMA LINDA UNIVERSITY
HEALTH



Ellen G. White

Adventist Vision



John Harvey Kellogg



LOMA LINDA UNIVERSITY
HEALTH



The Sweetheart of the Corn

**Kellogg's
TOASTED
CORN
FLAKES**
W. K. Kellogg
KELLOGG TOASTED CORN FLAKE CO.
BATTLE CREEK, MICH. AND TORONTO, CANADA

Kellogg's
TOASTED CORN FLAKES
Won't it's Favor Through it's Flavor
The Favorite Cereal in Millions of Homes
The original has this signature
W. K. Kellogg
KELLOGG TOASTED CORN FLAKE CO.
BATTLE CREEK, MICH. AND TORONTO, CANADA
ALSO MAKERS OF KELLOGG'S SHREDDED KRUMBLER,
DRINKET, KRUMBLER BRAN, AND OTHER CEREALS.

2020



HEALTH

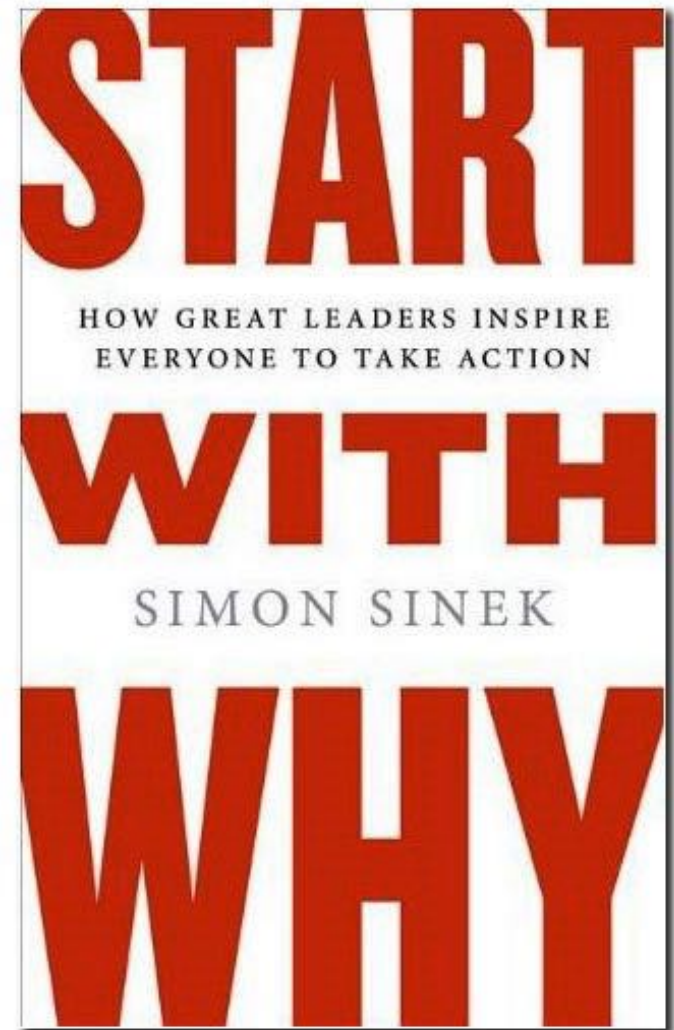


Florida Hospital, Orlando Today



LOMA LINDA UNIVERSITY
HEALTH

Begin with WHY



And end with WHY

Four-year old expert....



Why?

Flavia, age 4



Another Kellogg Story: The Chicago Mission

“I take it to be the duty of every Christian community to see that every homeless hungry person is fed. They need not only shelter and food, but kindness, encouragement, and instruction.”



Oct. 11, 1896



LOMA LINDA UNIVERSITY
HEALTH



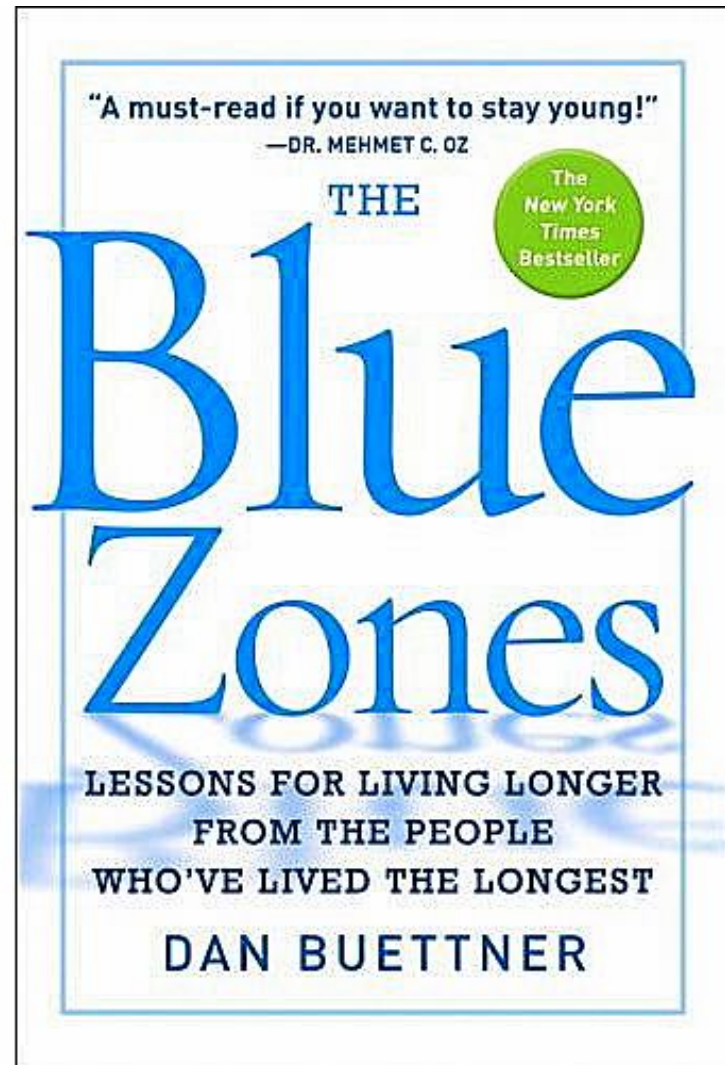
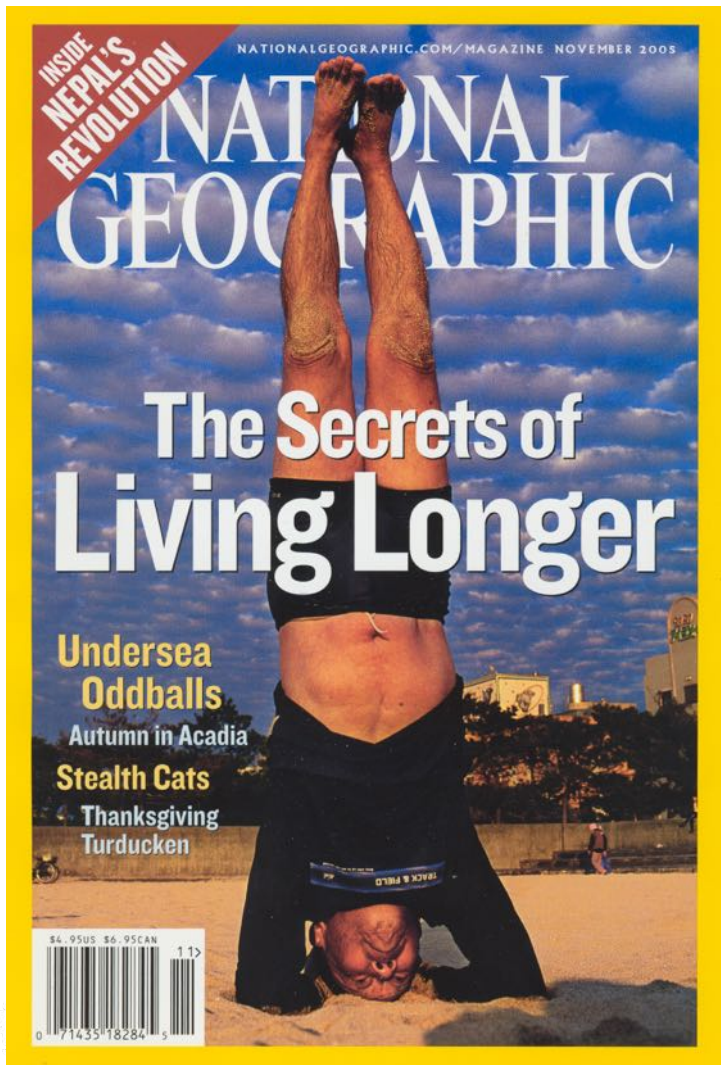
Loma Linda Sanitarium, 1905

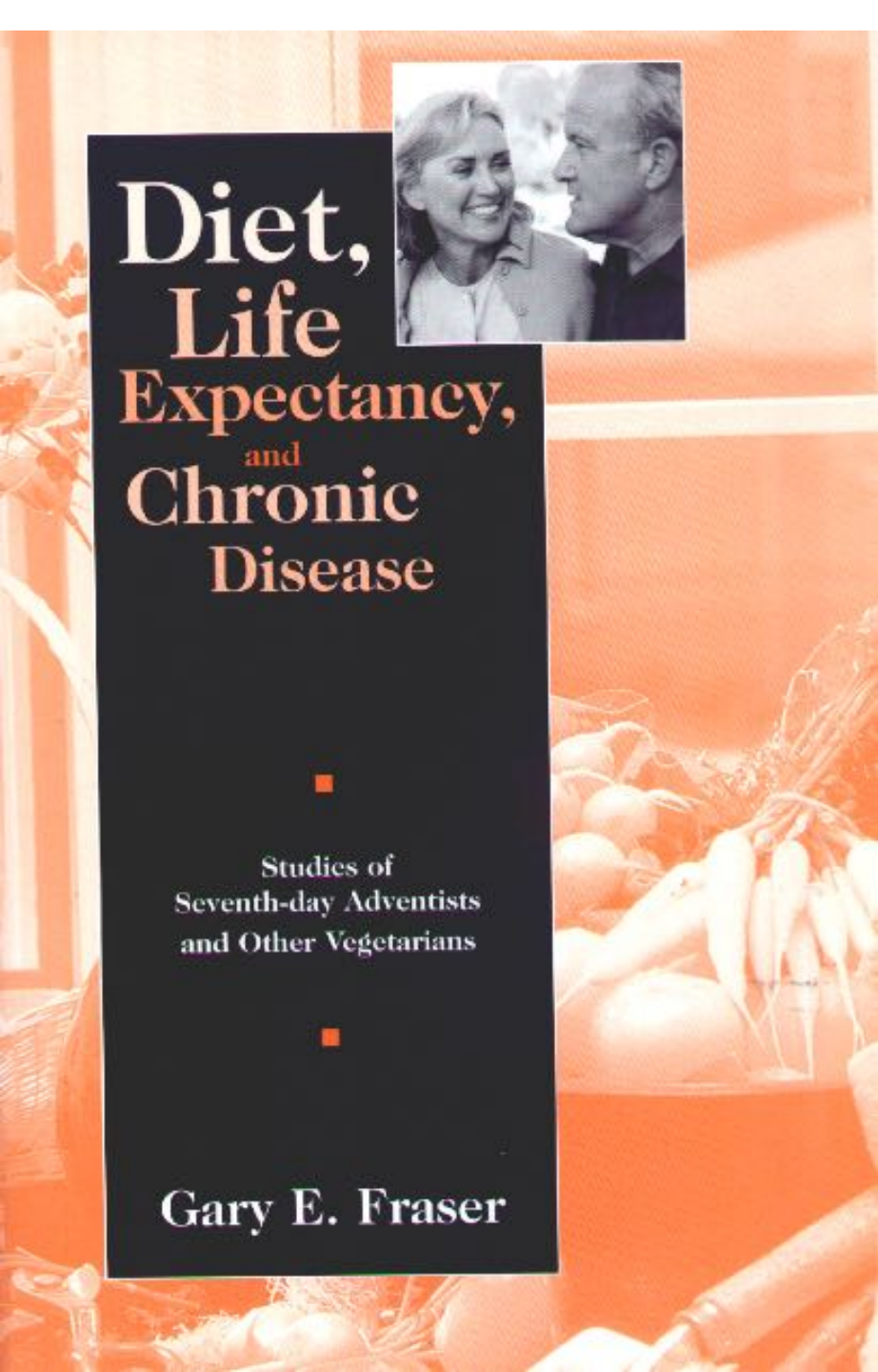


John A. Burden



Does the vision work...?





Diet, Life Expectancy, and Chronic Disease

■
Studies of
Seventh-day Adventists
and Other Vegetarians
■

Gary E. Fraser

Oxford University Press,
2003

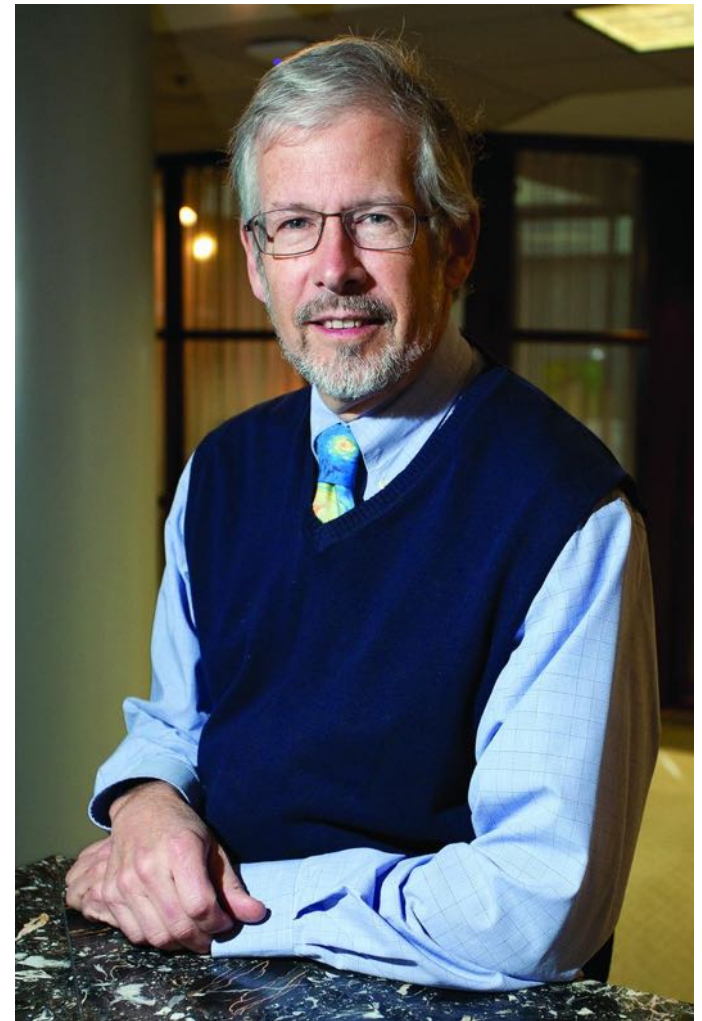
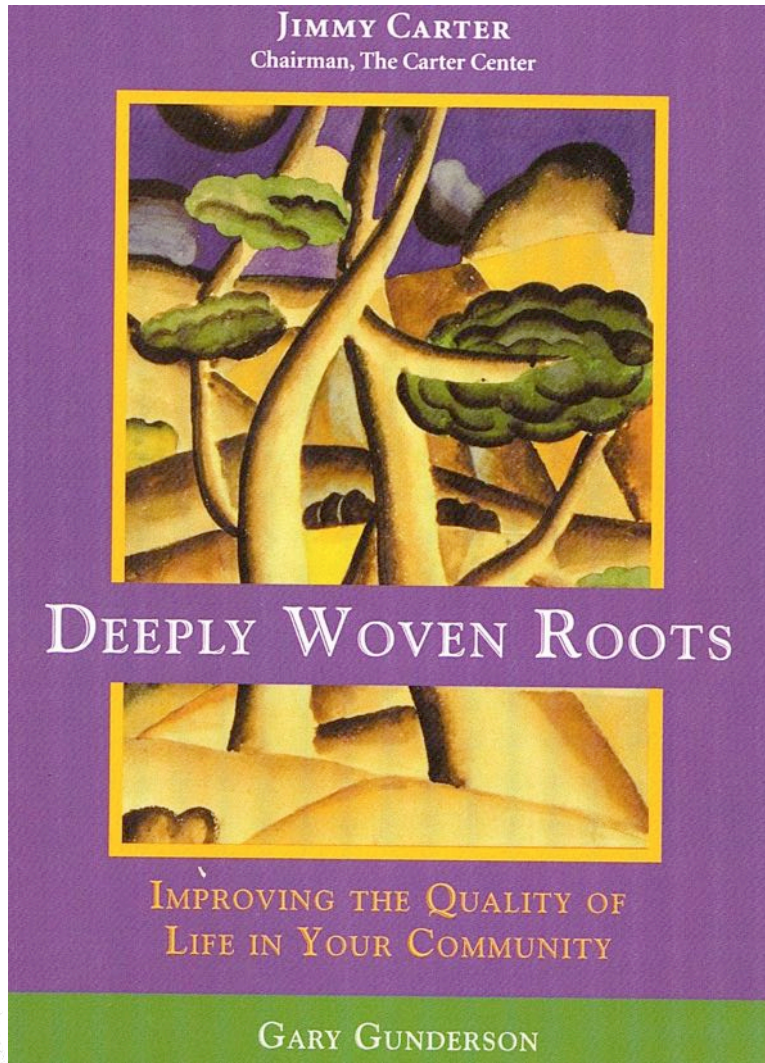
350+ pages on Adventist
health studies



LOMA LINDA UNIVERSITY
HEALTH

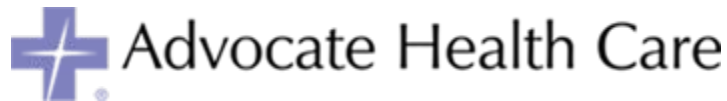


Meeting Gary Gunderson



Rev. Dr. Gary R Gunderson
Vice President Faith and Health and
Professor, Public Health Sciences
Wake Forest University Baptist Medical Center and
Professor, Faith and the Health of the Public
Wake Forest University School of Divinity

Health Systems Learning Group becomes Stakeholder Health



LOMA LINDA UNIVERSITY
HEALTH



Dignity Health™



...and over fifty other faith-based and charitable organizations

Primary Goal

To have faith-based and charitable health care systems help each other learn how better to deploy resources for community health development with strategic priority given to poor and vulnerable people.





Stakeholder Health

Insights from New Systems of Health

Editors: Teresa F. Cutts and James R. Cochrane



Developed with Support from the Robert Wood Johnson Foundation

Please visit our website:

<https://stakeholderhealth.org/>

Stakeholder Health
Transforming Health Through Community Partnership



LOMA LINDA UNIVERSITY
HEALTH

The Memphis Model

- » Methodist Le Bonheur Healthcare
- » More than 500 “covenanted congregations”
- » Congregational Liaisons: trained volunteers in the congregations
- » Navigators: employed by Methodist Le Bonheur Healthcare



Harry Durbin, Sr.
Senior VP, Faith and Health

A screenshot of the Methodist Healthcare website. The header includes the Methodist Healthcare logo and navigation links: Locations (Hospitals & Clinics), Our Services (Specialties & Classes), Patients & Guests (Guide To Your Stay), Find A Doctor (Physician Search), and a Search bar. The main content area is titled "Center of Excellence in Faith & Health > Congregational Health Network". On the left is a sidebar with links: Congregational Health Network, Family Care Center, Volunteers, Education and Training, and Resources. The main text area is titled "Congregational Health Network" and contains the following text: "The Congregational Health Network (CHN) is a collaborative partnership between Methodist's hospitals and Mid-South congregations. CHN has been called 'The Bridge to the Community,' because it has linked the two healing institutions the hospital and our faith communities. Some 500 congregations have made a covenant to participate in this collaborative relationship which has proven to give unsurpassed spiritual care to our patients and congregation members." Below this is a paragraph: "Methodist Le Bonheur Healthcare knows that your congregation is an important part of your life. We know that 70% of our patients belong to congregations here in the Mid-South. With these two things in mind, the Congregational Health Network was formed. The Congregational Health Network was formed to improve your health and the health of the region." Another paragraph follows: "The success of the CHN partnership between congregations, hospitals and community leaders has gained us the reputation internationally as 'The Memphis Model,' a model that has been studied and adopted in other cities due to its high quality and sustainable nature." Below this is a section titled "How It Works" with the text: "The CHN consists of Congregational Liaisons who are trained volunteers in the congregations serving closely with a".

Alameda County Care Alliance

» Organized by leaders at the Allen Temple Baptist Church in Oakland



Rev. Cynthia Carter Perrilliat

