

Notable California Bills Introduced in 2020



LOMA LINDA UNIVERSITY
HEALTH

Institute for Health Policy and Leadership

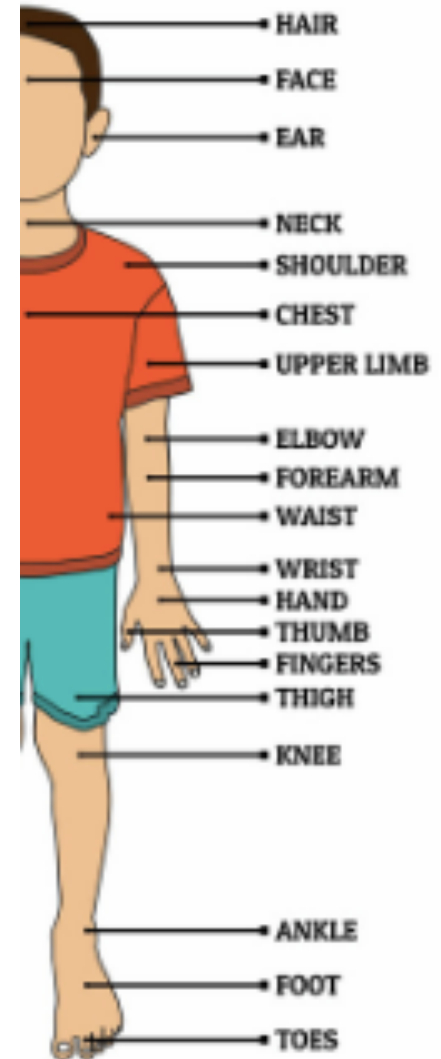
AB 890. Nurse Practitioners: Scope of Practice

- Introduced in 2019
- Creates Advance Practice Registered Nursing Board
- **Expands type of care NPs can provide without doctor supervision**
- NP must inform patients that NP is not physician or surgeon (English & Spanish)



AB 2432. Disposition of Human Body Parts by Hospitals

- Hospitals must ask, “do you require the retention of body parts for religious reasons?”
- If yes, hospital must retain body part(s) until funeral home takes possession
- Referred to Assembly Health committee



AB 2604. Health Information Technology: Worker Rights



- Medical technology system is deeply flawed and algorithms exhibit racial bias
- **Hospitals must notify direct patient care workers before implementing new IT**



LOMA LINDA UNIVERSITY
HEALTH

Institute for Health Policy and Leadership

AB 2747. Health Data Disclosure: Health Policy Organizations and Labor Unions

- **OSHDPD must provide limited datasets on hospital discharge, emergency visits, and ambulatory surgery upon request**
- OSHDPD cannot disclose if there is unreasonable risk to patient privacy

LOMA LINDA UNIVERSITY
HEALTH

Institute for Health Policy and Leadership

AB 2786. Hospital Emergency Departments: HIV Testing

- Based on a pilot from March 1, 2017 to February 28, 2019
- **Requires DPH to develop protocols for routine HIV testing for ED patients**



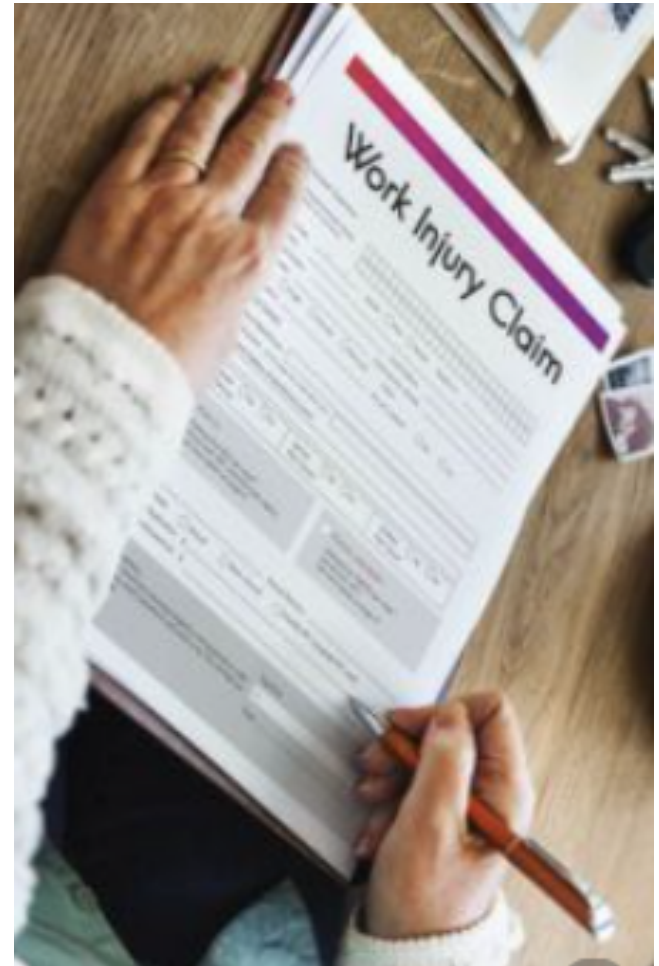
LOMA LINDA UNIVERSITY
HEALTH

Institute for Health Policy and Leadership



SB 893. Worker's Compensation: Hospital Employees

- Last year's SB 567 (died in Senate policy committee)
- **Direct patient care employees do not have to show infectious disease or musculoskeletal injuries arose from employment**



LOMA LINDA UNIVERSITY
HEALTH

Institute for Health Policy and Leadership

SB 1216. Ryan's Law

- Last year's SB 305 vetoed by Governor
- Newsom's veto message: bill would create “significant conflicts between federal and state law”
- **Hospitals cannot stop terminally ill patient's use of medical cannabis within the health care facility**



LOMA LINDA UNIVERSITY
HEALTH

Institute for Health Policy and Leadership

THANK YOU!

Any other questions?
helenjung@llu.edu or
ihpl@llu.edu

Let us know what topics
you would like for us to
cover next!



LOMA LINDA UNIVERSITY
HEALTH

Institute for Health Policy and Leadership